

Planting the SEEDS for a Brighter Future



LINKING FAMILIES
AND COMMUNITIES

Campaign for
Sprouts Early Education & Development
School

From Our Director...

At Linking Families and Communities, we are committed to young children and their families. For over 20 years, LFC has carried out its mission to empower parents in raising happy, healthy children by providing families with educational, economic and health support by coordinating services with community resources. We have provided for in home visitation, parenting classes, preschool tuition scholarships, child care consulting, child care nurse consulting, professional development, quality improvement initiatives for child care homes, centers and preschools, mental health consultation and transportation services in an effort to help families raise happy, healthy children.

That commitment has brought us to the present time, when we must take on the challenge of creating a new child care center for and with our community. Will you align with and support us by playing a part in this important child care project?

LFC has historically been, and will always be, a community partner on early childhood issues, initiatives and programs. However, it has become apparent that the time has come for us to take a greater leadership role to directly increase the child care supply in the Fort Dodge community.

In doing so, we will be able to positively impact children, families, businesses and our community with 103 child care spaces. I hope you will consider joining us in this effort.



An Urgent Need in Our Community

Webster County has experienced a decline in child care for over a decade, a problem that was compounded by the pandemic. When parents are unable to find quality care for their children, they are forced to stay home, forgo additional income, work reduced hours or leave the community.

The lack of child care has a domino effect. Parents are passing up promotions, employees miss work and businesses are unable to attract new employees to the community or retain employees that have or about to have children.



Annually, Iowa loses

\$935 million

as a result of child care breakdowns

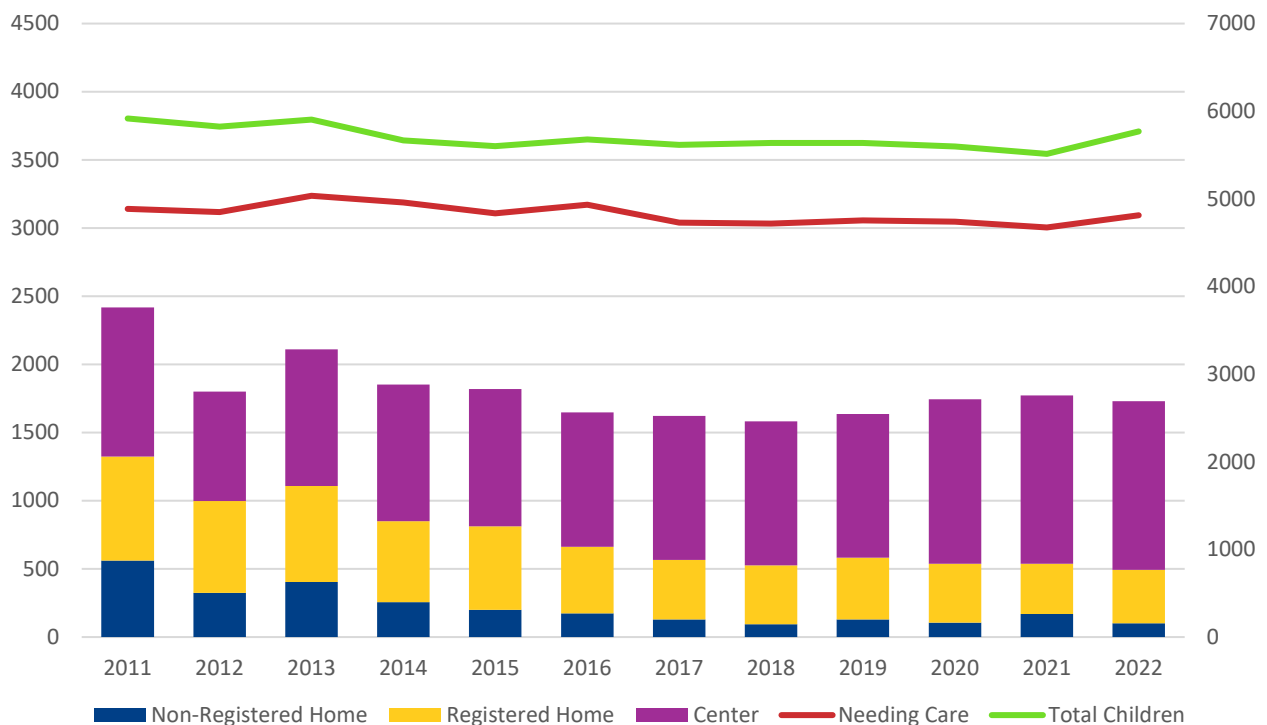
(combined lost tax revenue, absences, employee turnover).

Source: Untapped Potential: How Child Care Impacts Iowa's State Economy, U.S. Chamber of Commerce Foundation and Iowa Association of Business and Industry, February 28, 2020.

A Chronic Issue for Our Community

Webster County has been labelled a “**Child Care Desert**”, meaning that there are more than 3 children for every one available child care space.

WEBSTER COUNTY: Children (0-12 yrs.) vs. Child Care Spaces



Positive growth is happening in Fort Dodge, from jobs to population. The lack of child care is hindering further development and growth of businesses and our community. Today, we are ready to set the course for child care growth that moves with that growth trend.



LINKING FAMILIES
AND COMMUNITIES

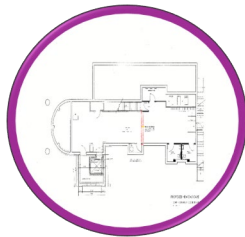


SEEDS of Change

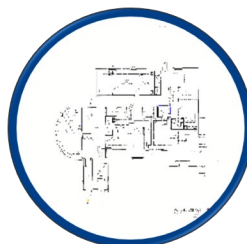
Linking Families and Communities has completed the necessary pre-design work for a new child care center to ensure efficiency, maximize capacity and ensure stability of the center for children, parents, businesses and the community. Important hallmarks of the center are:



High Quality Care
and Education



Expanded Operational Hours to
accommodate the 12-hour day-shift



Higher Staff Wages for
Recruitment/Retention

THE PROJECT

Remodel an Existing Building
9 Classrooms
Capacity of 103 children
Onsite Preschool
Transportation To/From School
Employ up to 30 staff

Total Project Cost

\$1.615 Million

Grant Secured

\$746,291

Fundraising Goal

\$869,103



How You Can Help

Ways to Participate

Consider offering your time and personal story to the campaign as a volunteer. Your voice is needed to make the SEEDS campaign a success.



*Your support will provide access to quality child care to 103 more children each year and will bolster economic growth in Fort Dodge. Help us **Plant the SEEDS for a Brighter Future** today.*



Ways To Give

Donors to the SEEDS campaign have several options when making a charitable gift. Linking Families and Communities accepts donations online, via cash, check, credit card, ACH, and gifts of stock.



Naming Opportunities

Giving is a personal journey. Some donors choose to honor a loved one or mentor with their gift. Others dedicate their gift to a friend or family member. A menu of recognition and naming opportunities is listed below.

\$350,000

Building

\$50,000

Vans (2)

\$30,000

Classrooms (9)

\$20,000

Playground

\$10,000

Reception, Office or Kitchen



"I believe Fort Dodge can do better. We can come together to love the young children and parents in our town by offering more quality childcare options in our town and building creative solutions to this problem before us."

Rev. Sarah Hill
First Presbyterian Church



**LINKING FAMILIES
AND COMMUNITIES**

For more information, contact:

Elizabeth Stanek
(515) 955-5437 x. 1
estanek@linking-families.com
www.linking-families.com